



**President:** Lenny Langevin ...[lensanitques@comcast.net](mailto:lensanitques@comcast.net)  
**Vice President:** Ian H Manley..... [ihmserv@comcast.net](mailto:ihmserv@comcast.net)  
**Treasurer:** Phil Arcouette Sr. .... [philbyarc47@verizon.net](mailto:philbyarc47@verizon.net)  
**Secretary:** Bernie Feinerman ....[feinerman@comcast.net](mailto:feinerman@comcast.net)

Gateway Turners website [www.gatewayturners.org](http://www.gatewayturners.org) webmaster – JimSilva [jim@basketryetc.com](mailto:jim@basketryetc.com)  
An official chapter of the American Association of Woodturners [www.woodturner.org](http://www.woodturner.org)

## **Minutes of the August 13, 2012 meeting of the Gateway Turners**

*The next “hands on” session will start at noon on Saturday September 22 at Lenny’s shop.*

Lenny opened meeting – 18+ people. Phil reported that we have \$950.58 in our treasury.

Lenny raised the subject of the club taking part in the AAW chapter collaborative. Members were asked to come up with sketches of something that included turnings that at least 6 members could do. The club decided that it would not subsidize the trip of the club member who is supposed to accompany the club entry to the next AAW Symposium. [http://www.woodturner.org/sym/sym2012/chap\\_challenge.pdf](http://www.woodturner.org/sym/sym2012/chap_challenge.pdf). The rules for the AAW 2013 Chapter Collaborative will probably be available in the October AAW Journal.

Ian brought up that the AAW would give free Symposium entrance fee to any club that got 10 new members by yearend. We did get 2 new members to the club during the meeting.

There was a brief discussion of Bob Sutter’s AAW article on Treenware in the current AAW journal.

**Website** –Our library section will be added to the website and it would be nice to have pictures from club members w/description. There is no private information in our web site yet so there is no need to try to register.

John Buchenan , [jbuchenan@verizon.net](mailto:jbuchenan@verizon.net) , is building a library data base in process and will accept donations of DVD’s and books. John plans to send an email out asking for donations, listing what is available, and asking members to respond with what they would like added to the library.

Ian Manley gave a demonstration of segmented turning on August 3 at the Fuller Craft Museum from 1-4 PM. There was a morning demonstration by Rich Friberg from 10-1 on spindle turning and making Barley twists. Both demonstrations were well received. Ian reported that there always seemed to be about a dozen adults and kids present. The lathes at Fuller are in poor condition and the air conditioning did not keep up with the people load. He did receive a personal letter from the director thanking him for all of his efforts.

Mention was made that the Fuller Craft Museum has very little in the way of woodturnings for sale in their gift shop and at their annual Christmas sale. No one had any ideas as to how to change that situation.

Members asked for demonstrations on inside-out turnings, hollowing techniques, and methods of finishing and dyeing.



John Mascione donated 4 14” chainsaw blades for a Homelite saw to the club.

Bernie Feinerman donated “Art of Small Turning” by William Duce, and 3 DVD’s: Bill Grumbine : bowl turning, Penn State Industries : pen turning, and Sorby: tool usage.

Bernie brought up that the Gr. New Bedford Regional Vocational H. S. Adult Ed. Program (1121 Ashley Boulevard, New Bedford) has a course on woodcarving which might be of interest if anyone wanted to get the basics of carving in hand to use to incorporate into woodturnings.

<http://www.gnbvt.edu/AdultEd/Fall12Brochure.pdf> Course # WC-01 Night: Thursday starting Sept. 10 for 8 weeks. This course will cover basic and advanced carving depending on the individual’s ability. You will learn to carve in relief, in the round and several other styles. We will discuss safety, tools, sharpening, woods and finishes. Materials will be provided for the first class. Students will assume additional costs thereafter. District Price: \$100.00 Non District Price: \$125.00 (people over 60 years of age get a \$10 discount

<http://www.pocketmags.com/viewmagazine.aspx?titleid=493&title=Woodturning> is the place to get an electronic subscription to an expensive, but good, woodturning magazine. A 12 month subscription costs 26.99 pounds . The application provided can print pages from the magazine on a PC or Mac and can be also be read on many of the latest gadgets. Back issues from Dec 2010 forward are available at 2.99 pounds each. (Currency rates fluctuate & on 8-15-2012, 27 pounds = \$42.36, 2.99 pounds = \$4.66 plus currency conversion fees)

### Bring Back



Jim Leatherwood made this Black Locust box which was won by John Mascione



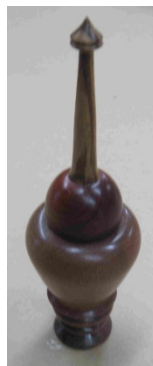
George Pritchard made this Box Elder box which was won by Emillio Iannucillo

### August challenge (s)

**(1) make a pillbox aka a threaded airtight box** ala Jim Silva. Instructions are coming to our website in the “tips/articles” section soon. Both Bernie, and John Buchenan, brought in spare pill box assemblies for anyone’s use if they wanted to try their hand at making one.



John Buchenan made this tall pill box



Peter Sampson made this perfume bottle



Jim Silva completed his demo box from last month



Bernie – 2 sets of pill box parts in process

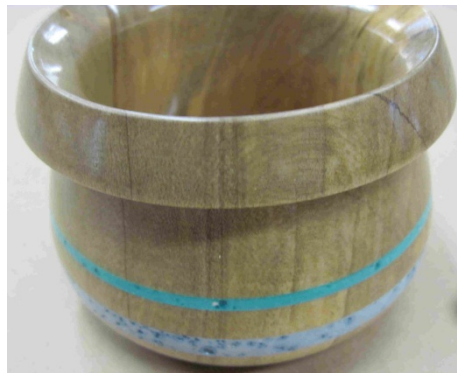


Some pill box raw material

**(2)- embellish a turning.** The embellished piece must have part, or all of it, colored in some way, turned from any wood and - you can stain it, burn it, paint it, dye it, inlay it, ebonize it, shoe polish it, gold leaf it, ????



Jim Leatherwood – two alcohol based dyed bird house ornaments



Peter Sampson - inlaid goblets. The left one is inlaid with dye, plaster, and white glue. The right one has two inlaid bands of anodized Aluminum



George Pritchard - a Box Elder box



Bernie – burnt Oak platter



Jim Silva – two dyed Maple Burl boxes using water soluble dyes from a Woodworkers Supply sample pack



Bob Scott – carved pen of Spanish Cedar

**September challenge** - make a birdhouse of any size (from ornament to life size).

## Show and Tell



Ian Manley – Box Elder platter (with voids filled with a mixture of Bloodwood dust and CA glue), a Thula burl box, and a Compote made from a section of Pear tree log

Don Diedrich turned new handles for an Ikea rolling pin



Jim Leatherwood – Limed and dyed Ash vase and a Black Locust box

Peter Sampson – tried his hand at grooving a discontinuous surface

Bob Scott – pen assortment including a refurbished one his grandfather made



Bill Dooley – Walnut bowl – a large chunk flew off, was found a few days later, and reglued in place



William Shrek showed his first turnings: 2 mushrooms, a baseball bat, a Bocote pen, Mahogany goblet, a “wannabe” goblet, and a Cedar bowl



Phil Arcouette – showed an assortment of turnings including a Cherry burl bowl, curly maple box w/buckeye finial, Oak bowl, Bowl of California olive wood, and some boxes from pallet wood

Wally Kemp – Red Maple burl, bleached with 2 part bleach, finished with Minwax water based Poly

**Show and Ask**



Bill Dooley brought in a Yew root section with the question as to *how to best hollow it*. Consensus(?) was to mount it from the “top” perhaps using a screw chuck , possibly gluing the top into a glue block, adding a steady rest near the “bottom” to stabilize and help secure the blank, and then hollow it.

Bernie brought in a spalted and punky blank of unknown wood. The question – *how to turn it without lots of tearout*. Consensus(?) was to rough it out extra thick, then soak it for a long time in either a 50/50 mix of white glue and water, or else a 50/50 mix of sanding sealer and thinner. The best way to submerge the blank would be to put a rock inside of a plastic container to use as a weight. Jim Silva pointed out that while CA glue works well on hardening “green” wood, when used on dry, old wood, it can sometimes cause the wood to delaminate along the grain lines.



## Demonstration

Jim Leatherwood demonstrated making miniature birdhouse ornaments



Jim provided us with a 4-5 page illustrated handout that is available on our website in the “tips/articles” section.

**Wood raffle** - An assortment of wood was available and raffled off.

## Next Meeting is September 11, 2012

Lenny will demonstrate miniature turning



## Coming events

CNEW is hosting Binh Pho on Sept 6 (piercing) in Worcester, Ma.

Gateway hands-on September 22

AAW Segmenting Symposium October 18-21, 2012 at Lake Tahoe, Nv

Gateway will have a panel discussion on finishing and dying October 9.

Jim Duxberry will demonstrate Kaleidoscopes October 18 at Oceanwoodturners, and at MSSW October 23

Jimmy Clewes will be at MSSW October 27<sup>th</sup> and 28<sup>th</sup> 2012

David Ellsworth's demo at MSSW will be April 6<sup>th</sup> and 7<sup>th</sup> 2013.